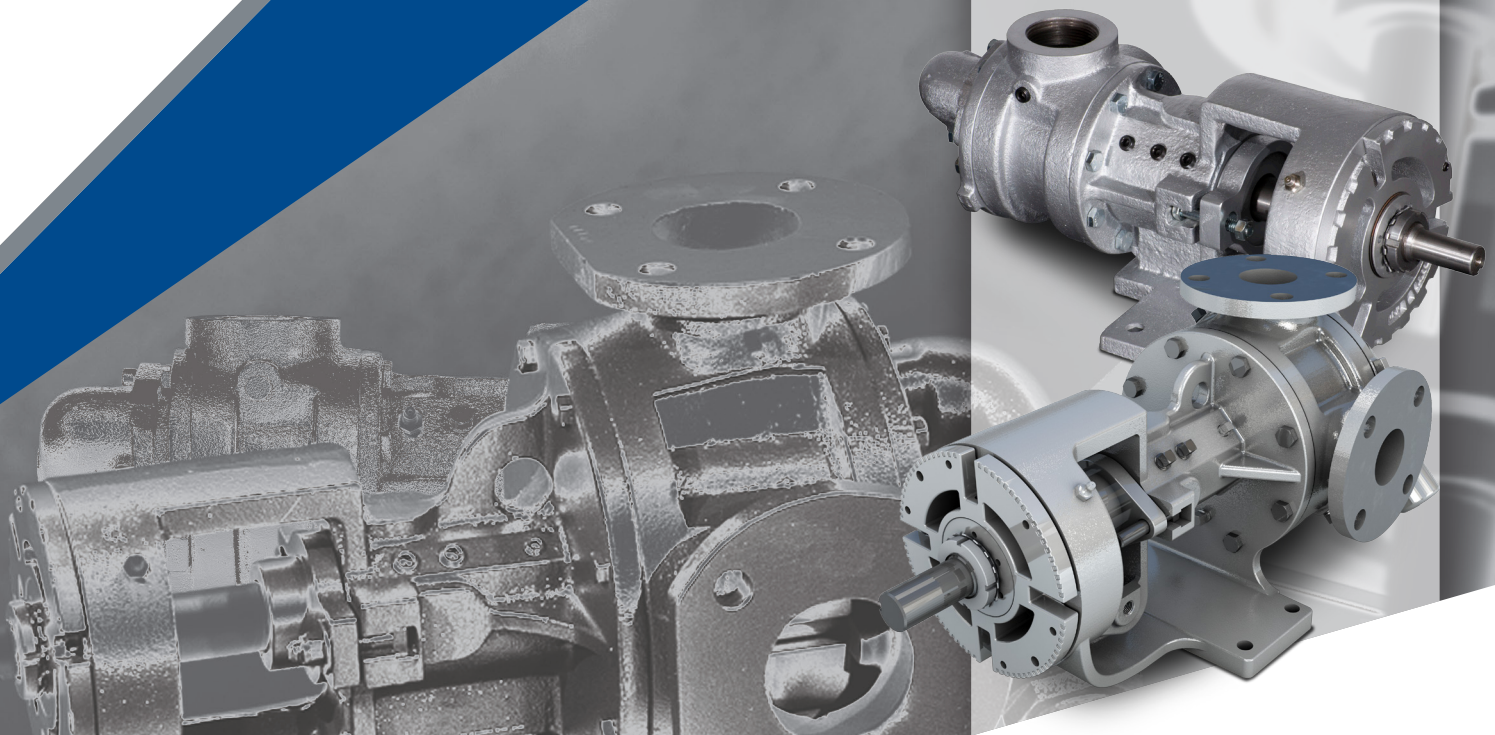


maag



industrial
pumps

G Series
Internal Gear Pumps



Where Innovation Flows

psgdover.com



a **DOVER** company

G Series Internal Gear PUMPS

A Universal Workhorse with Unprecedented Speed!

Maag Industrial, part of PSG®, a Dover Company, is a leading global provider of innovative, high-quality industrial gear pumps for the safe and efficient transfer of liquids. G Series pumps from Maag Industrial are durable, flexible and efficient positive displacement gear pumps that excel in challenging applications. Reliable and capable of overcoming your most difficult fluid-transfer needs, G Series pumps are ideally suited for applications requiring a pump that can move liquids ranging from thin to highly viscous.

Our world-class distributor network ensures you will have access to the pump you need when you need it. We are devoted to your business' success by servicing your needs with world-class products, delivery and best-in-class expertise. The G Series pumps combine all of this while offering some of the shortest gear pump lead times in the industry. Put us to the test today and contact your local distributor at www.maag.com.

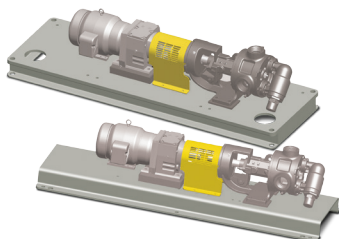
Quality • Speed of Delivery • Interchangeability

G Series Pumps are Ideally Suited For...

- Chemical processing
- Petrochemicals
- Soaps and detergents
- Paints, coatings and adhesives
- Inks and pigments
- Rubbers and plastics
- Resins
- Polyurethane foam
- Food and beverage
- Chocolate
- Oilseed
- Pharmaceuticals
- Personal care products
- Textile manufacturing
- Fire retardants
- Petroleum refining
- Petroleum distribution
- Oil and gas
- Lubricating grease and oil
- Construction
- Roofing materials
- Hot oils
- Hydraulic oils
- Heat-transfer fluids
- Glycol
- Automotive
- Pulp and paper
- Mining
- Particulates

G Series Applications

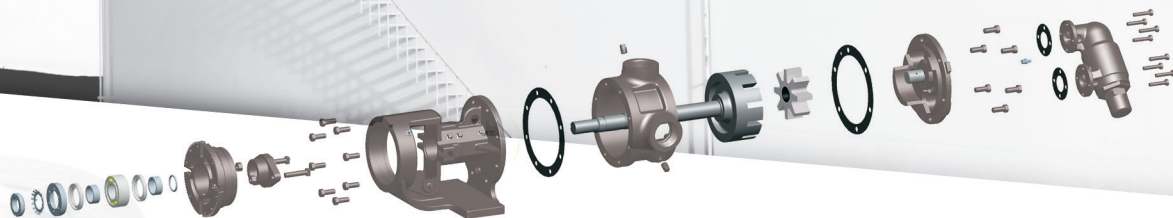
G Series pumps are excellent for transferring high-viscosity fluids with only two moving parts. This pump operates equally well in both directions and provides a positive, non-pulsating flow. Easy to maintain and user-friendly with a single adjustment end-clearance, the G Series features an enlarged bearing housing at the rear end of the pump that provides easy drive-end access to the shaft seal and single-point end-clearance adjustment. The pump casing also revolves to allow for multiple inlet and outlet positioning. The G Series pump has a flexible design and can be customized for your specific needs.



G Series Baseplate Systems

G Series pump baseplate systems minimize deflection and vibration to maximize the life of the pump, motor and gear reducer. In addition, their innovative design allows easy and accurate shaft alignment.

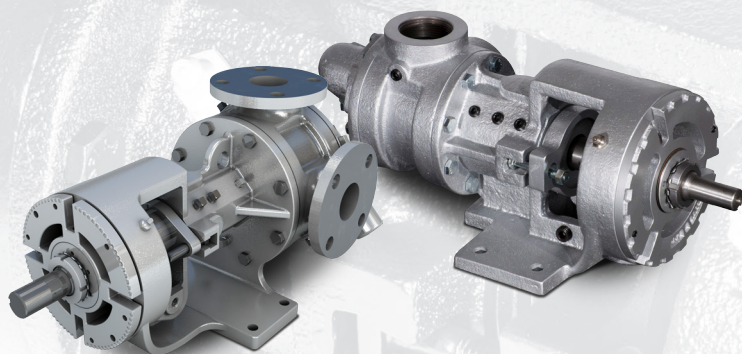




Interchangeability Allows Simple and Easy Upgrading with Minimal Installation Costs.

G Series pumps are interchangeable with up to 95% of the internal gear pumps currently available in the market. No changes needed to piping, driver, coupling, flow rates or baseplates.

As an added benefit, G Series pumps and spare parts are designed to be direct replacements for Viking® H, HL, K, KK, L, LQ and LL internal gear pump models.



Sizes Available

Model	Cast Iron Port Size	Stainless Steel Port Size
G1-2	1-1/2" NPT	1-1/2" ANSI
G1-4	1-1/2" NPT	1-1/2" ANSI
G1-24	2" NPT	2" ANSI
G1-32	2" NPT	2" ANSI
G1-55	2" NPT or 2-1/2" ANSI	2-1/2" ANSI
G1-69	3" ANSI	3" ANSI

G Series Performance & Technical Information: Pump Selection Performance Criteria

Nominal Pump Rating		Max Discharge Pressure	Nominal Pump Rating		Max Discharge Pressure	Temperature Range	
Stainless Steel			Cast Iron			Celsius	Fahrenheit
Model	rpm	gpm	psig	rpm	gpm	psig	
G1-2	1,150	10	150	1,750	15	200	-51° to 343°
G1-4	1,150	20	150	1,750	30	200	-51° to 343°
G1-24	520	50	150	780	75	200	-51° to 343°
G1-32	520	65	150	780	100	200	-51° to 343°
G1-55	420	90	150	640	135	200	-51° to 343°
G1-69	420	110	150	520	140	200	-51° to 343°

Temperature: Pumps operating at temperatures greater than 107°C (225°F) require increased pump clearances. If you require temperatures greater than 107°C (225°F) please contact factory.

Viscosity: G Series pumps are capable of pumping viscosities up to 440,000 cSt.

Model Cross-Reference

G Series Model	EnviroGear®	Viking®	Tuthill®	Gorman-Rupp®
G1-2	E1-2	H	015	CG
G1-4	E1-4	HL	030	GH
G1-24	E1-24	K	120	NK
G1-32	E1-21	KK	130	NM
G1-55	E1-55	L & LQ	200	RM
G1-69	E1-69	LL	210	RP

Viking® is a registered trademark of Viking Pump, Inc., a unit of IDEX Corporation. Tuthill® is a registered trademark of Tuthill Corporation. Gorman-Rupp® is a registered trademark of Gorman-Rupp® Company.

Where Innovation Flows

maag



industrial
pumps

PSG

22069 Van Buren Street

Grand Terrace, CA 92313-5651

P: +1 (909) 422-1731 • F: +1 (909) 783-3440

psgdover.com

PSG[®] reserves the right to modify the information and illustrations contained in this document without prior notice. This is a non-contractual document. 05-2015

Authorized PSG Partner: