

**115 Hilton Street West
Easton, PA 18042**

**Ph: 1-800-854-0539
Fx: 1-610-252-6095**

**1212 First State Blvd
Wilmington, DE 19804**



Suggested Accessories & Upgrades for Sealed Gear Pumps



Power Control Monitor
Recommended to protect your pump from run dry, dead head and upset process conditions.



Gauges, Gauge Guards & Diaphragm Seals
Protect and isolate all forms of system instrumentation from hazardous and corrosive process fluids.



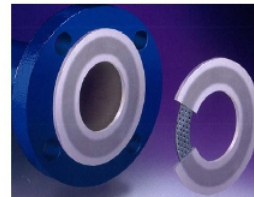
Basket Strainer
Help protect your pump and instrumentation from premature failure due to solids present in the process fluid.



Variable Frequency Drive
Broaden the performance range of your pump with the ability to control the output speed of your pump motor.



Soft Starter
Smoothly accelerate and decelerate the pump motor increasing the life time of rotating equipment by reducing mechanical stress.



Flange Gaskets
Ask us about cost effective, reuseable PTFE flange gaskets that do not cold flow or require retorquing after installation.



BaseTek Polymer Concrete Baseplate
Non-metallic polymer concrete baseplates for ANSI and sub-ANSI pumps provide a chemical resistant mounting surface for your pump



Pump Connectors
Designed to compensate for pipe expansion, vibration and misalignment (pipe strain) in process piping and vessels.



Pressure Relief & Back Pressure Valves
Designed to protect your pump and system from over pressurization, act as an anti-siphon valve, and enhance the overall performance of the pump and system.



Portable Carts
Need to use your pump in more than one location? Ask how our custom portable carts can be built to suit your equipment and service needs.