



## **Suggested Accessories & Upgrades for Sealed Centrifugal Pumps**



### **Power Control Monitor**

Recommended to protect your pump from run dry, dead head and upset process conditions.



### **Gauges, Gauge Guards & Diaphragm Seals**

Protect and isolate all forms of system instrumentation from hazardous and corrosive process fluids.



### **Basket Strainer**

Help protect your pump and instrumentation from premature failure due to solids present in the process fluid.



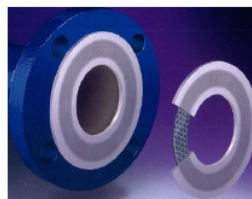
### **Variable Frequency Drive**

Broaden the performance range of your pump with the ability to control the output speed of your pump motor.



### **Soft Starter**

Smoothly accelerate and decelerate the pump motor increasing the life time of rotating equipment by reducing mechanical stress.



### **Flange Gaskets**

Ask us about cost effective, reusable PTFE flange gaskets that do not cold flow or require retorquing after installation.



### **Spare Mechanical Seal / Rebuild Kits**

Reduce downtime and simplify your parts inventory with spare mechanical seals and pump rebuild kits.



### **Pump Connectors**

Designed to compensate for pipe expansion, vibration and misalignment (pipe strain) in process piping and vessels.



### **Pressure Relief & Back Pressure Valves**

Designed to protect your pump and system from over pressurization, act as an anti-siphon valve, and enhance the overall performance of the pump and system.



### **Portable Carts**

Need to use your pump in more than one location? Ask how our custom portable carts can be built to suit your equipment and service needs.